



MLC MasterKey Unit Trust IncomeBuilder

Annual distribution commentary, 2022 financial year

24 June 2022

Summary

This financial year was a positive year for investors who rely on Australian shares for income. This was unlike the 2021 financial year (FY2021), where Federal and state government measures limiting the spread of COVID-19 resulted in a significant contraction in economic activity and lower profits for many Australian companies across a range of industries. This in turn caused many companies to defer or cancel their dividend payments due to sharply lower earnings. These changes were necessary to preserve their balance sheet strength in an extremely uncertain business trading environment, and included traditionally large dividend-payers like the banks, property trusts and infrastructure companies.

However in the 2022 financial year (FY2022), with economic recovery and an improved outlook for corporate earnings we have seen an increase in dividend payments, in particular there were strong increases in dividend payments made by Australian banks, ANZ, NAB and Westpac. There has also been strong dividend payments generated by the resources sector, in particular from BHP and Woodside Energy.

The investment managers we employ in MLC MasterKey Unit Trust IncomeBuilder (MLC IncomeBuilder), Maple-Brown Abbott and Antares Equities, actively adjusted the fund's holdings when COVID emerged in early 2020. They increased exposure to companies expected to continue to sustain earnings, and reduced exposure to those more likely to be negatively impacted. We believe changes made by our investment managers helped position the fund to receive sustained dividends in future years, and while a significant reduction in the fund's underlying dividend income for the last financial year was inevitable, this financial year the fund's underlying dividend income and distribution of realised capital gains has bolstered the total distribution paid to investors.

On Tuesday, 31 May 2022 the last cash distribution for the FY2022 was made to investors in MLC IncomeBuilder. Table 1 provides the annual cents per unit (cpu) distribution and its components for this financial year and the previous eight years for comparison.

Table 1: MLC IncomeBuilder distributions history

Financial year ending 31 May	2021/22	2020/21	2019/20	2018/19	2017/18	2016/17	2015/16	2014/15	2013/14
Total underlying income distribution* (cpu)	6.21	2.92	6.84	8.60	7.70	7.93	8.45	8.52	8.16
Capital gains (cpu)**	11.56	8.93	9.26	14.24	4.76	9.26	8.09	14.73	5.64
Total distributions (cpu)	17.77	11.85	16.10	22.84	12.46	17.19	16.54	23.25	13.80
Franking level	65%	63%	76%	68%	102%	89%	90%	77%	101%

* Underlying distribution consists of dividend and other income and excludes capital gains.

**Part of the capital gains are concessional capital gains which are non-tax assessable for individuals and superannuation investors as follows:

- Individual investors: approximately half of the capital gains are concessional capital gains which are not tax-assessable
- Superannuation fund investors: approximately a third of the capital gains are concessional capital gains which are not tax-assessable.

The above amounts are historical distributions and are not indicative of future distributions.



MLC MasterKey Unit Trust IncomeBuilder

Annual distribution commentary, 2022 financial year
24 June 2022

In summary, for the FY2022, the fund's:

- total distribution is moderately higher than last year due to an increase in the fund's underlying income, comprising dividends, Real Estate Investment Trust (REIT) income, interest and other income.
- underlying income is mostly franked dividends which provide investors with a tax-efficient income stream.
- capital gains were higher than the prior year's. Half of the capital gains are concessional capital gains and are therefore not tax-assessable for individuals, and a third are not tax-assessable for superannuation fund investors. The remainder of the distributed capital gains is taxed at the investor's marginal tax rate. It's clear the outlook for corporate earnings, and the fund's ability to generate a growing income stream each year, has improved compared to the same time last year.

Underlying income distribution

We manage the fund to allow all dividends and any other income generated by the fund's investments to flow through to investors rather than 'engineering' an income stream through more frequent portfolio turnover, hybrid investments or using derivatives. In more normal environments the fund's distributions tend to be stable over the medium term, reflecting the dividend policies of the companies the fund invests in. While the environment of the last two years has been unusual, we've managed the fund through other market dislocations and we continue to believe the investment approaches of our investment managers and regular fund distributions provides a more reliable way of delivering sustainable long-term tax efficient income to investors.

However, there have been times when the fund's underlying income growth (shown by the orange bars in Chart 1) slows or reduces as company earnings slow. Due to the nature of the economic shutdown required in the last two years to contain COVID-19, dividends were impacted far more than in previous shocks. However, as FY2022 has shown, our investment approach has returned to producing a steady increase in income, as it has in the past 26 years since the fund's inception.

The economic recovery means the outlook for corporate earnings continues to improve, and as a result, dividend income passed through to investors is returning to pre-COVID levels.

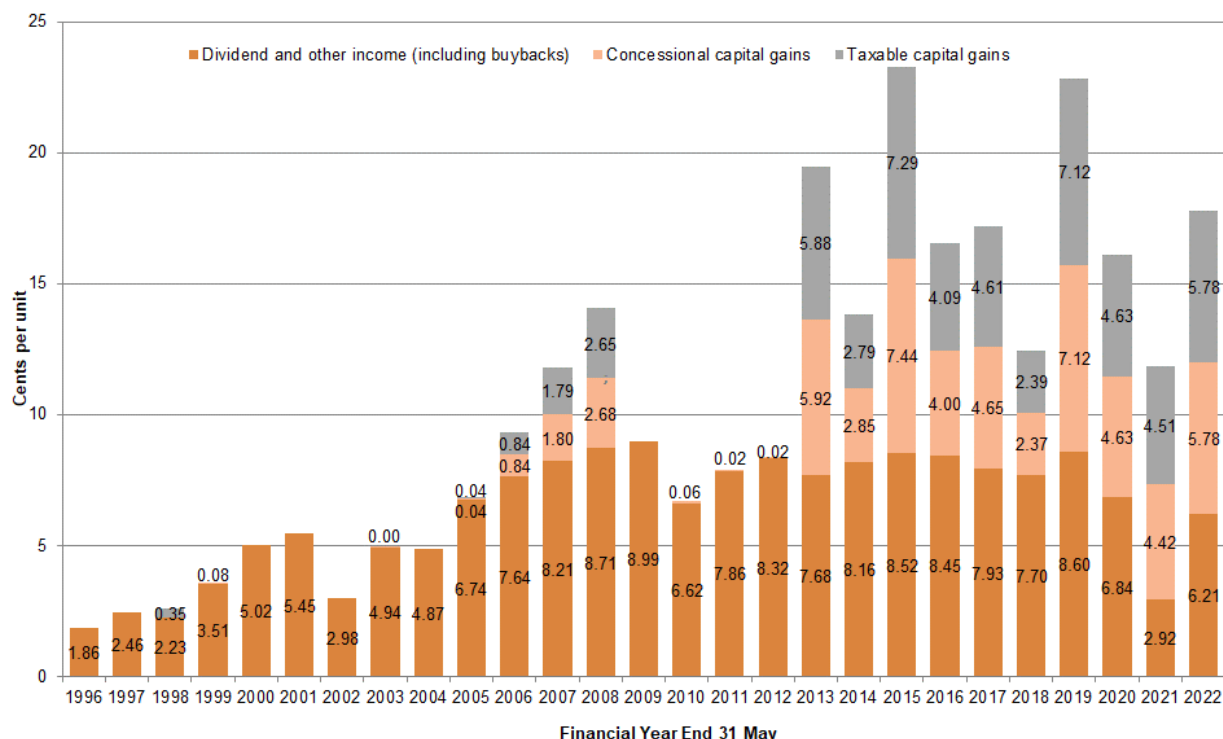
Unlike FY2021 when the fund paid no distribution in August 2020 because dividends received by the fund were insufficient to cover the expenses, leaving no net income available to distribute, in FY2022 the fund's net income was adequate to distribute in each quarter (August, November, February and May).

Despite last year's underlying income being understandably significantly lower than recent years, Chart 1 shows that when you look back over the entire 26 years since the fund's inception, that it has a history of achieving its primary objective of producing a growing, tax-efficient income stream.

MLC MasterKey Unit Trust IncomeBuilder

Annual distribution commentary, 2022 financial year
24 June 2022

Chart 1: MLC IncomeBuilder annual distributions



Source: MLC IncomeBuilder. Distributions are calculated net of fees. Concessional capital gains are shown for individual investors; superannuation fund investors will have lower concessional capital gains and higher taxable capital gains than shown in the chart.

The above amounts are historical distributions and are not indicative of future distributions.

The fund's underlying income excludes capital gains and currently comprises mostly dividend income with a small exposure to distributions of Australian REITs and interest income from the immaterial cash exposure. Most of the underlying income is franked dividends which provide investors with a tax-efficient income stream.

Franking levels

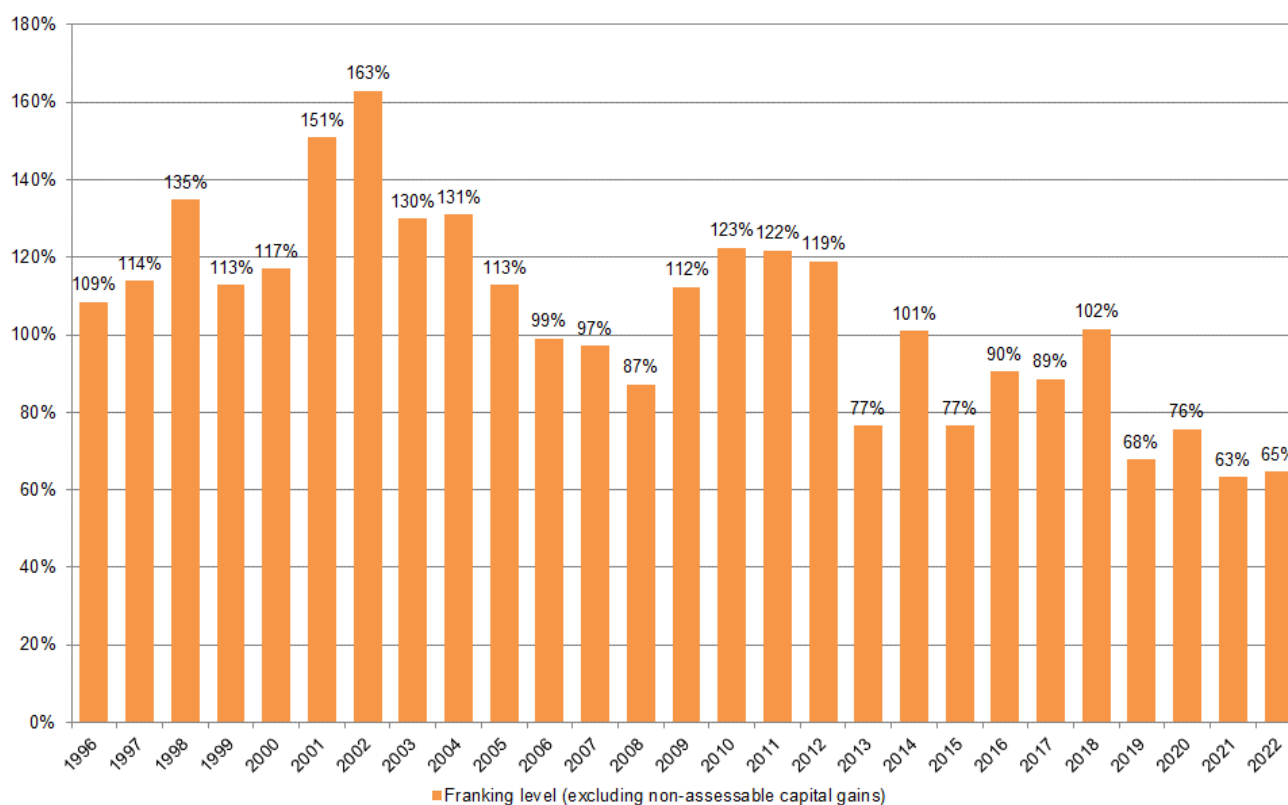
MLC IncomeBuilder has delivered a tax-efficient income stream with a franking level of 65% this year (Chart 2). The franking level is marginally higher than last financial year. The distribution component of assessable capital gains in FY2022 returned to being lower than the dividend income. FY2021 was the only year the fund's assessable capital gains (grey bars) exceeded the dividend income (dark orange bars), a result of the earnings environment companies experienced in FY2021 since COVID-19 reached our shores in early 2020.

Since its inception, the fund has maintained a high franking level by investing in Australian companies that derive most of their earnings from Australian sources, and therefore pay domestic tax on those earnings.

MLC MasterKey Unit Trust IncomeBuilder

Annual distribution commentary, 2022 financial year
24 June 2022

Chart 2: Franking levels for MLC IncomeBuilder



Source: MLC IncomeBuilder. Franking levels shown in the graph are calculated net of fees and exclude non-assessable capital gains for individual investors, in accordance with FSC's standard. Superannuation fund investor franking levels would be lower than shown in the graph as their concessional capital gains will be lower, and taxable capital gains higher.

The above amounts are historical franking levels and are not indicative of future franking levels.

The fund's franking level is a measure of the imputation credits attached to its income distribution.

Capital gains

Over the long term the fund has demonstrated the majority of its distributions have been franked dividend income. However, the fund is also required to distribute any realised capital gains at the end of its financial year. Capital gains can arise when the fund sells shares at prices higher than their original purchase price.

Where our active investment managers, Antares and Maple-Brown Abbott, believe share values have reached their full potential, we expect the managers to seek better long-term risk and return opportunities. In this way our managers seek to grow and preserve investor's capital over the long term, from which future franked dividend income may be generated. However, these portfolio changes can result in the realisation of capital gains.

These gains typically feature in the fund's distribution after periods of very strong market performance and as a result of corporate actions such as takeovers and buybacks. After the stringent measures imposed on companies by Federal and state governments, the Australian economy and company earnings swiftly rebounded, and the share market responded with strong price rises. Realised capital gains have therefore been generated this financial year.

Our investment managers tend to hold shares for long periods of time and don't generally buy and sell the same company within a year. Therefore the benefit of the capital gain discount is passed onto investors. That's why half of the capital gains distributed this year (shown by the light orange bars in Chart 1) were concessional capital gains, which are not tax-assessable for individuals, and a third are not tax-assessable for superannuation fund investors.



MLC MasterKey Unit Trust IncomeBuilder

Annual distribution commentary, 2022 financial year
24 June 2022

The net taxable realised capital gains portion of the annual distribution is automatically reinvested as additional units. This ensures an investor's capital base, from which their dividend income is generated, continues to grow by being re-invested in the fund. The fund has operated in this way since it was established, as it helps investors remain focussed on maintaining a growing tax-efficient income stream.

Dividends from the fund's investments

Table 2 shows dividends paid by MLC IncomeBuilder's larger company holdings in FY2022 and how their dividend has changed compared to the same time last year. More than 75% of the fund is invested in the companies below. While some companies didn't change, or decreased, their dividends compared to this time last year, the majority have increased their dividends significantly this financial year.

In general, Australian companies reported strong operating performance over the December half of FY2022. Around half of all companies reporting beating earnings expectations, while a quarter were in-line. Notably, retail sales remained resilient and confidence in a post-COVID economic recovery was high. The major banks in particular performed well on expectations of interest rate rises and the positive flow on effect this could have on their net interest margins.

Table 2: Dividends paid in FY2022, by MLC IncomeBuilder's largest company holdings, ordered from large to small exposures

Company	Dividend (\$ per share)	% change in dividend compared to FY2021
NAB	\$1.27	112%
Westpac	\$1.21	290%
ANZ	\$1.42	137%
Telstra	\$0.16	0%
Coles Group	\$0.61	2%
Commonwealth Bank	\$3.75	52%
Suncorp	\$0.31	-14%
Woodside Energy	\$1.87	260%
BHP	\$4.80	132%
Brambles	\$0.29	13%
Origin Energy	\$0.20	-11%
QBE Insurance	\$0.30	650%
Orica	\$0.37	12%
Amcors Depository Interests	\$0.50	-24%
CSL	\$3.01	7%
Incitec Pivot	\$0.09	Dividend in FY2021 was \$0.00
Insurance Australia Group	\$0.19	171%
Link Administration	\$0.08	6%
Star Entertainment	\$0.10	5%
Nine Entertainment Group	\$0.13	79%

Securities mentioned in this commentary may no longer be held in MLC IncomeBuilder.



MLC MasterKey Unit Trust IncomeBuilder

Annual distribution commentary, 2022 financial year
24 June 2022

Outlook

It's clear the outlook for corporate earnings, and the fund's ability to generate a growing income stream each year as improved compared to the same time last year. While the fund's stable distribution trend was disrupted by the COVID-19 shutdowns, significantly impacting earnings of companies, distributions are now starting to recover.

We believe the fund is well placed to access the recovery in dividends and resume annual distribution growth with tax benefits due to the experience and research skills of Maple-Brown Abbott and Antares Equities. These managers' investment approaches have proven they can provide a reliable way of delivering sustainable long-term tax efficient income to investors. The active investment style and deep company research practiced by both managers will help position the fund's investments appropriately as the economy continues to recover and companies gradually return their dividends and payout ratio policies back towards pre-pandemic levels.

Up-to-date commentary on the performance of MLC IncomeBuilder, including information on the dividends declared by underlying companies, is available on the Fund Profile Tool on <https://www.mlc.com.au/fundprofiletool>.

Important information

This information is provided by MLC Investments Limited (ABN 30 002 641 661, AFSL 230705), part of the Insignia Financial Group of companies (comprising Insignia Financial Ltd ABN 49 100 103 722 and its related bodies corporate) ('Insignia Financial Group'). The capital value, payment of income, and performance of the Funds are not guaranteed. An investment in the Funds is subject to investment risk, including possible delays in repayment of capital and loss of income and principal invested. No member of the Insignia Financial Group guarantees or otherwise accepts any liability in respect of any financial product referred to in this communication.

This information is directed to and prepared for Australian residents only.

This information may constitute general advice. It has been prepared without taking account of an investor's objectives, financial situation or needs and because of that an investor should, before acting on the advice, consider the appropriateness of the advice having regard to their personal objectives, financial situation and needs.

You should obtain a Product Disclosure Statement (PDS) relating to the financial product mentioned in this communication issued by MLC Investments Limited, and consider it before making any decision about whether to acquire or continue to hold the product. A copy of the PDS is available upon request by phoning the MLC call centre on 132 652 or on our website at mlc.com.au.

Past performance is not a reliable indicator of future performance. The value of an investment may rise or fall with the changes in the market.

Any projection or other forward-looking statement ('Projection') in this communication is provided for information purposes only. No representation is made as to the accuracy or reasonableness of any such Projection or that it will be met. Actual events may vary materially.

Any opinions expressed in this communication constitute our judgement at the time of issue and are subject to change. We believe that the information contained in this communication is correct and that any estimates, opinions, conclusions or recommendations are reasonably held or made at the time of compilation. However, no warranty is made as to their accuracy or reliability (which may change without notice) or other information contained in this communication.

MLC Investments Limited relies on third parties to provide certain information and is not responsible for its accuracy. MLC Investments Limited is not liable for any loss arising from persons relying on information provided by third parties.

The investment managers are current as at the date this communication was prepared. Investment managers are regularly reviewed and may be appointed or removed at any time without prior notice to you.

MLC Investments Limited may use the services of any member of the Insignia Financial Group where it makes good business sense to do so and will benefit customers. Amounts paid for these services are always negotiated on an arm's length basis.