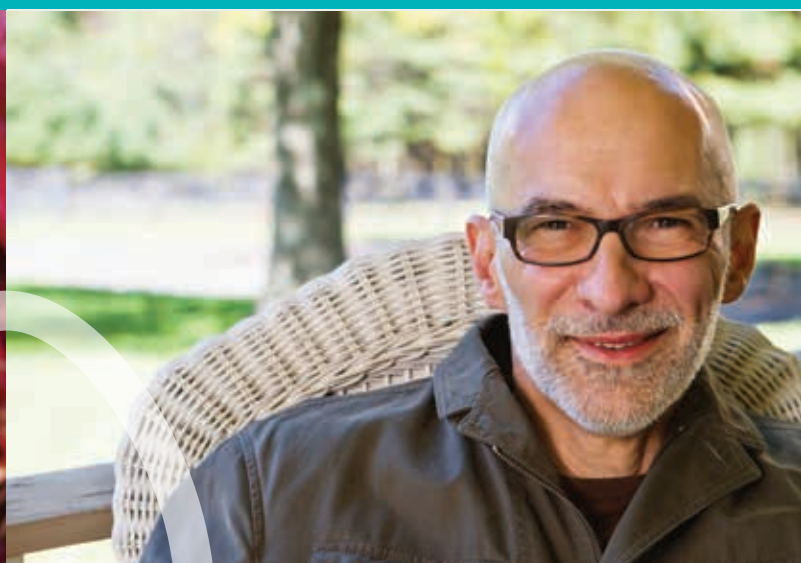




MLC Inflation Plus portfolios

Plan your future with more confidence



**The MLC Inflation Plus portfolios give you the
choice, expertise and access you need
*to plan your financial future more confidently.***

Plan your future with more confidence

Investing can be a great way to grow your wealth and establish a secure foundation for your financial future.

But markets, and the returns they deliver, can be unpredictable and volatile. So you may feel uncertain about simply relying on market performance to deliver the returns you need.

Some of the things you might be worried about are:

- rollercoaster returns from the share market – swings up and down
- big market losses that can set back your investment and are difficult to recover from
- returns that don't keep pace with inflation, so the purchasing power of your money declines
- who has the skill and experience to manage your money in a complex, rapidly changing environment.

The MLC Inflation Plus portfolios are actively managed portfolios that aim to provide you with returns above inflation over a particular time frame, whatever the ups and downs of the market.

This gives you more certainty you'll get the returns you need to help achieve your financial goals.

Our experts also aim to deliver a smoother path of returns than the market and limit the risk of big losses that can permanently reduce your wealth.

The MLC Inflation Plus portfolios give you the choice, expertise and access you need to plan your future with more confidence.



Plan your future with more confidence

Actively managed portfolios that aim to deliver returns above inflation, despite market ups and downs.

MLC Inflation Plus portfolios at a glance

 <p>Choice of three portfolios</p> <p>Select the portfolio with the right return target and investment time frame to help you achieve your financial goals.</p>	 <p>Above-inflation return objective</p> <p>Each portfolio is actively managed to target a return above inflation, rather than simply relying on market performance for returns. That means you can be more confident you'll achieve the return you need.</p>	 <p>Experience and track record</p> <p>We've successfully used the 'inflation plus' approach since 2005, a period that included the global financial crisis. And the portfolios are designed and managed using our market-leading investment process, including our Investment Futures Framework.</p>
 <p>Focus on risk management</p> <p>We aim to achieve target returns by carefully managing risk, particularly by focusing on limiting the risk of big losses that can set back your investment. This also helps smooth the returns of the portfolios.</p>	 <p>Flexible asset allocation</p> <p>As markets change, we adjust the mix of assets in the portfolios so they are better positioned to deliver returns and manage risk.</p>	 <p>Extensive diversification</p> <p>Investing in a very wide range of assets and strategies gives us many sources of return and ways to manage risk. The portfolios also benefit from the insights of specialist investment managers from all over the world.</p>

Why do investment returns need to beat inflation?

Inflation is the rise in the cost of living. Over time, it reduces the purchasing power of your money, which means the same amount buys you less.

To maintain the purchasing power of your money, you need a return on your investments of at least the inflation rate.

It's important to keep this in mind when deciding what return you need from your investments.

For example, a 4% return for a 12-month term deposit sounds attractive. But if inflation is 3%, the 'real' (above inflation) return on your investment is only 1%.

A common measure of inflation is the Consumer Price Index (CPI).

Choose the right portfolio to help you plan your future





You can choose from three MLC Inflation Plus portfolios, each with a different return target above inflation, level of return volatility and investment time frame.

Investors need different solutions depending on the return they want to achieve their financial goals, the level of risk they're comfortable with and how long they have to invest.

If you have many years to invest you might be saving for a particular long-term goal, such as retiring at 60. Although it's a long way off, you want more confidence that your investment will deliver the returns to help you meet that goal. In this case, the MLC Inflation Plus – Assertive portfolio may suit you.

If you're in or approaching retirement, you may be looking for an investment that will both provide smoother returns than the market's performance and keep your investment growing. Your confidence in market investing may have been shaken by previous volatility in your returns, and safer options, like a term deposit, may not offer a return above inflation.

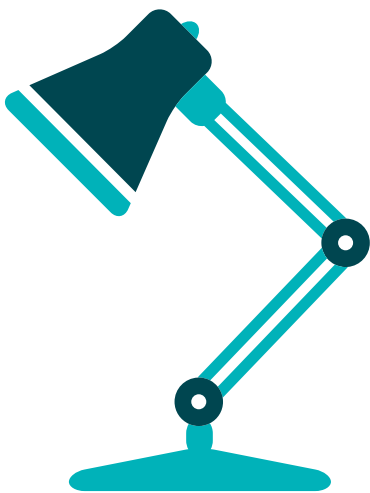
In these circumstances, you might consider an MLC Inflation Plus portfolio that fits your investment time frame.

MLC Inflation Plus portfolios				
	Portfolio	Investment objective (before fees)	Time frame to achieve objective	Volatility profile
Conservative 	MLC Inflation Plus – Conservative	3.5% pa above inflation	3 years	
Moderate 	MLC Inflation Plus – Moderate	5% pa above inflation	5 years	
Assertive 	MLC Inflation Plus – Assertive	6% pa above inflation	7 years	

In the MLC Inflation Plus – Assertive Portfolio, we can use gearing to help achieve the investment objective in some market conditions.

Expertise you can trust

When you invest in financial markets, it's because you want to make your money work harder and grow your wealth.



And you accept returns could be volatile because you understand that achieving high returns over the long term means taking some risk.

But what if your investment time frame isn't long enough to ride out any market downturns? Or what if returns are below inflation? In these circumstances, returns from the market may not provide the returns you need to achieve your financial goals.

We realise that some investors want more certainty about the returns they'll get, and less volatility on the way to getting them.

Aiming for a particular return can help you plan your future with more confidence.

This is why we developed the MLC Inflation Plus portfolios. These portfolios don't rely just on the performance of financial markets to deliver returns. Instead, they're actively managed to aim for the above-inflation returns you need, even when markets are weak.

Of course, although we carefully manage the portfolios, we can't guarantee they'll deliver the target returns at all times. However, even if there are significant market downturns we expect each portfolio to deliver a positive return over its investment time frame in most circumstances.

A strong track record

We have successfully used the 'inflation plus' approach in the MLC Inflation Plus – Assertive Portfolio since 2005, a period that included the global financial crisis.

A proven investment process

The MLC Inflation Plus portfolios are managed using our market-leading investment process. This process has consistently provided solid returns and effective risk management in a range of market conditions.

Key to the investment process is our unique Investment Futures Framework.

In an unpredictable and constantly changing world, the Investment Futures Framework helps us continually identify the very wide range of economic and market conditions, or 'scenarios', that could occur.

It then helps us analyse how these scenarios could affect the portfolios. For example, what would happen to your investment if economic growth in China was to slow significantly? Or, what if the global economy recovers faster than economists expect?

Our investment experts use the insights from this analysis to adjust the portfolios. They change the asset allocation to control potential risks and capture return opportunities. This means the portfolios are better positioned for a range of possible future environments.

Managing risk to control losses and deliver smoother returns

Investors in financial markets often don't realise that the key to achieving strong investment returns is controlling risk – particularly limiting exposure to very large losses.

That's because it can be hard for your portfolio to recover from those losses, especially if you don't have a long time to invest.

Limiting big losses is crucial for investors in or near retirement, who have less opportunity to rebuild their savings.

But it's also important for those newer to investing. A major setback early on can lead these investors to sell out of the market at a bad time, and permanently affect their confidence about investing.

So in managing the MLC Inflation Plus portfolios, we aim to limit the risk of large losses. This means you can have more confidence that you won't suffer a serious loss at an important stage of your investment journey.

This approach should also deliver a smoother, less volatile pattern of returns than the market.

We manage risk mainly through the portfolios' flexible asset allocations and wide diversification.

Asset allocations that can change when markets change

Over time, you'll see significant changes in the asset allocations of the MLC Inflation Plus portfolios. That's because these portfolios are managed differently to many traditional investment funds.

The MLC Inflation Plus portfolios have very flexible asset allocations. This means we can easily change the mix of assets as market conditions evolve and we find different ways to manage risk and achieve returns.

In contrast, traditional investment funds often have tight asset allocation ranges. The manager can't make significant changes to the asset mix when markets change. This means the fund's returns largely reflect market performance – good or bad.

Extensive diversification to manage risk and capture returns

Different types of assets perform well in different times and circumstances – when some are providing strong returns, others may not be.

The MLC Inflation Plus portfolios can invest across a very wide range of assets and strategies to help smooth out the portfolios' returns.

Simply investing in mainstream assets (like shares, bonds and cash) won't always provide the returns to achieve the portfolios' above-inflation targets. So we also invest in carefully chosen alternative assets and strategies (like hedge funds and private assets) that can help us deliver returns and manage risk. Some of these sophisticated strategies are unique to us.

The portfolios aren't just diversified across asset classes and strategies, but also across investment managers.

We use many specialist managers, who may be our own investment experts or some of the best investment managers from around the world.

A trusted manager for your money

With over 125 years of looking after Australians' financial needs, and over 25 years of managing diversified portfolios, you can be confident you're invested with one of Australia's most experienced wealth managers.

Easy access to sophisticated investing

Accessing the MLC Inflation Plus portfolios is simple.

It's easy to get started

The most common way to invest in an MLC Inflation Plus portfolio is through an Investor Directed Portfolio Service (IDPS), master trust or wrap.

The portfolios are available on:

- MLC MasterKey Fundamentals
- MLC MasterKey Business Super
- MLC MasterKey Personal Super
- MLC Wrap, and
- MLC Navigator.

You can also invest directly with us through MLC Investment Trust if you have a minimum of \$50,000.

A clear view of your investments and markets

You'll always know exactly how your investment is performing through our Fund Profile Tool on:

- mlc.com.au – for an investment through an MLC IDPS, master trust or wrap, and
- mlcinvestmenttrust.com.au – for a direct investment with us.

There you'll find indepth commentary explaining where your money's invested and why.

And our investment experts will keep you across what's happening in markets and economies around the globe, along with any changes we've made to your portfolio.

Next steps...

To find out more about the MLC Inflation Plus portfolios or to invest, please speak with your financial adviser or call us on **132 652**.

mlc.com.au

mlcinvestmenttrust.com.au



**For more information call us
from anywhere in Australia
on 132 652 or contact your
financial adviser.**

Postal address

PO Box 200
North Sydney NSW 2059

**mlc.com.au
mlcinvestmenttrust.com.au**

Important information

This information has been provided by MLC Investments Limited (ABN 30 002 641 661).

This communication contains general information and may constitute general advice. Any advice in this communication has been prepared without taking account of individual objectives, financial situation or needs. It should not be relied upon as a substitute for financial or other specialist advice.

Before making any decisions on the basis of this communication, you should consider the appropriateness of its content having regard to your particular investment objectives, financial situation or individual needs. You should obtain a Product Disclosure Statement or other disclosure document relating to any financial product issued by MLC Investments Limited and NULIS Nominees (Australia) Limited (ABN 80 008 515 633) as trustee for the MLC Super Fund (ABN 70 732 426 024), and consider it before making any decision about whether to acquire or continue to hold the product. A copy of the Product Disclosure Statement or other disclosure document is available upon request by phoning the MLC call centre on **132 652** or on our websites at **mlc.com.au** or **mlcinvestmenttrust.com.au**

An investment in any product offered by a member company of the National Australia Bank group of companies does not represent a deposit with or a liability of the National Australia Bank Limited ABN 12 004 044 937 or other member company of the National Australia Bank group and is subject to investment risk including possible delays in repayment and loss of income and capital invested. None of the National Australia Bank Limited, MLC Investments Limited or other member company in the National Australia Bank group guarantees the capital value, payment of income or performance of any financial product referred to in this publication.

Past performance is not indicative of future performance. The value of an investment may rise or fall with the changes in the market.

The inflation plus outcomes for the MLC Inflation Plus portfolios are targets only. No representations are made that they will be met.

