



OAKTREE

Oaktree and its Principals and employees actively participate in and financially support a broad range of charitable activities. Many Principals and senior employees serve on charitable boards or hold other leadership positions in charitable organisations, and have been recognised for their contributions. Additionally, Oaktree encourages all of its employees to give back to their communities, in part by lending its corporate support to local charitable causes. Oaktree funds all of its charitable donations at the corporate level or personally, rather than from any of its investment funds.

Oaktree Capital Management, L.P.

- Oaktree manages two debt portfolios for MLC:
 - **Global high yield debt**, since 2005
 - **Global bank loans**, since 2007
- Manages \$67 billion, across the company, as of 30 September 2008
- Offices in 8 countries. Based in Los Angeles, California, USA.
- Over 470 employees worldwide

Why has MLC chosen Oaktree?

Oaktree was appointed by MLC due to their exceptional research across multiple niche segments of the global debt market. This research results in an informational advantage and provides the insight required for achieving high returns without commensurate risk. Commitment to consistency, protection of capital and superior performance in difficult markets results in an investment style appropriate for MLC's diversified debt strategy.

Oaktree has significant access to both public and private loan market opportunities which MLC has been able to take advantage of when opportunities arise.



SHELDON STONE
Principal and Portfolio Manager

Philosophy on investing

Oaktree views high yield debt investing as the conscious bearing of credit risk for profit and acts as a prudent lender rather than a securities trader. Their business is lending money to lower-rated yet creditworthy corporations; the buying and selling of securities is simply the means. They generally buy issues that they believe can be held to maturity.

Oaktree chooses a defensive, research-intensive strategy to allow themselves to simultaneously strive to produce superior results and limit risk. They undertake "hands on" bottom up credit analysis on individual investment opportunities. Oaktree focuses on assessing corporate cash flows and applies proven analysis skills to evaluating the downside risks associated with potential investments. Their detailed and regular corporate financial

performance monitoring enables Oaktree to identify potential credit problems in the portfolio early on and take the appropriate investment decisions to deal with them.

Investment process

Oaktree builds portfolios from the "bottom-up" and ensures broad diversification. For a given credit, the research analyst completes a thorough review of the security (including completion of their proprietary Credit Scoring Matrix) and discusses his or her findings with the portfolio manager. If the security meets Oaktree's credit threshold, it is then considered further in the context of its pricing relative to other available bonds. If it is then subsequently purchased, it is allocated across all eligible portfolios. Each portfolio and security is systematically monitored by the portfolio manager and the analysts on an ongoing basis.



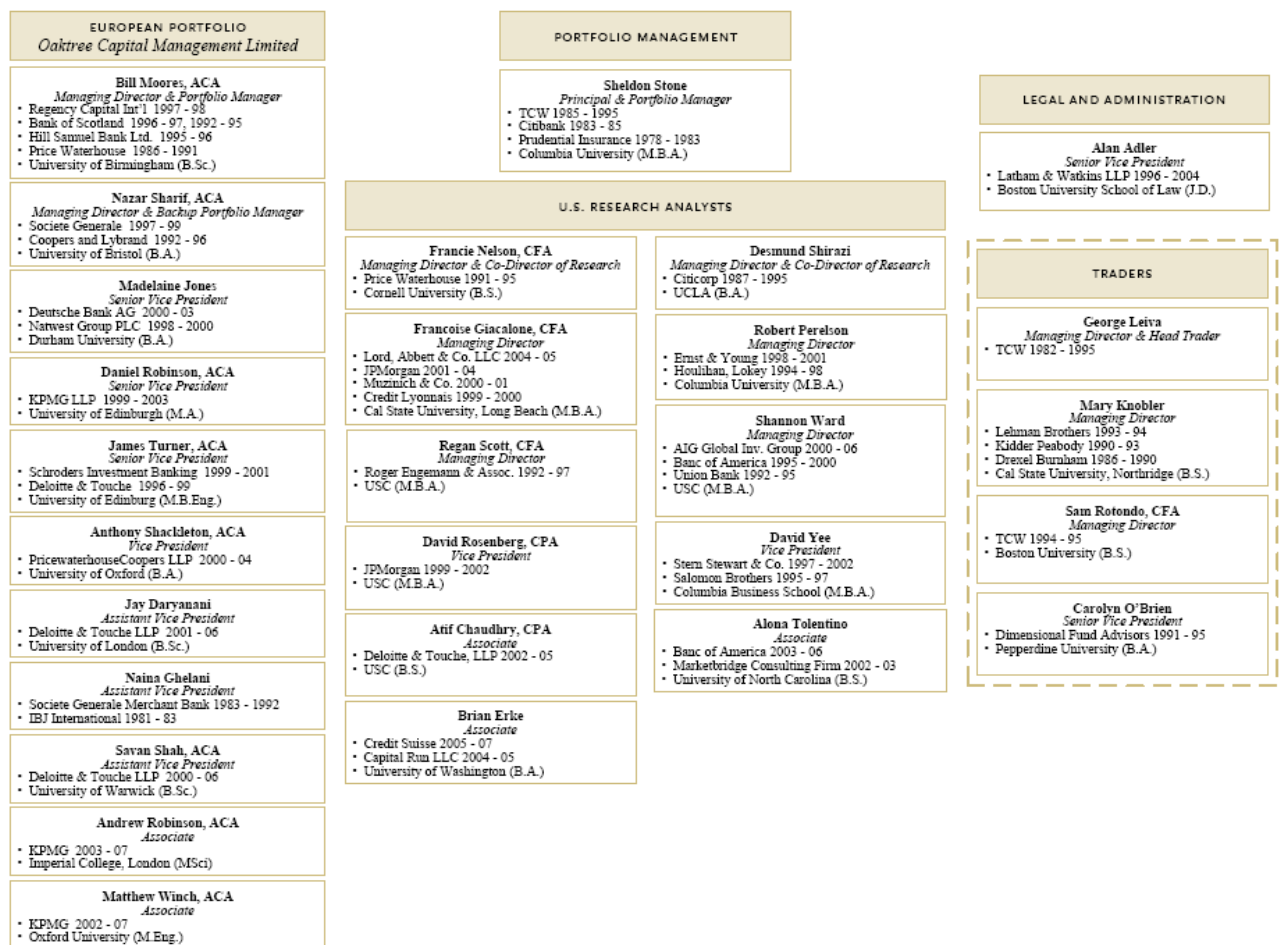
Oaktree's **Global High Yield** bond capabilities include both North America and Europe. Their U.S high yield portfolios invest in dollar-denominated bonds of creditworthy North American corporations, while their European high yield portfolios invest in the bonds of European corporations and the Euro-denominated bonds of non-European corporations. Oaktree's high yield bond portfolios do not employ equity-like securities (such as convertibles and warrants) or emerging market debt, and they limit their exposure to zero-coupon bonds, interest reset bonds and PIKs. Oaktree does not use derivatives in its high yield portfolios.

Within high yield debt portfolios, Oaktree will opportunistically invest in bank loans where the relative risk/reward of moving up within a company's capital structure is deemed attractive. In addition to this opportunistic bank loan exposure, MLC invested in an investment vehicle dedicated to the purchase of bank loans managed by Oaktree since September 2007.

Oaktree's high yield debt team is an extraordinarily experienced and credentialed group. They average 12 years of relevant experience and many have worked together for over a decade. Most of the firm's professionals hold advanced business degrees or have completed the CFA program. With backgrounds in accounting and banking, Oaktree's professionals have what they believe to be the most appropriate skill set and experience for their business. The high yield team focuses their efforts on performing excellent credit research in order to minimize the incidence and severity of credit problems.

Investment people

High Yield Bond Team Organization Chart



HIGH YIELD DEBT MANAGEMENT (BOND AND LOAN PORTFOLIOS)

Sheldon Stone

Principal and Portfolio Manager

Mr. Stone serves as the portfolio manager of Oaktree's U.S. high yield bond activities and has supervisory responsibility for Oaktree's European High Yield Bond, European Credit Opportunities, Mezzanine Finance and Senior Bank Loan strategies. Mr. Stone, a co-founding member of Oaktree in 1995, established TCW's High Yield Bond Department with Mr. Marks in 1985 and ran the department for ten years. Prior to joining TCW, Mr. Stone worked with Mr. Marks at Citibank for two years where he performed credit analysis and managed high yield bond portfolios. From 1978 to 1983, Mr. Stone worked at The Prudential Insurance Company where he was a Director of Corporate Finance, managing a fixed income portfolio exceeding \$1 billion. Mr. Stone holds a B.A. degree from Bowdoin College and an M.B.A. in Accounting and Finance from Columbia University. Mr. Stone also serves as the chairman of the Investment Committee of Bowdoin College and the California Community Foundation.

Desmund Shirazi

Managing Director, Co-Director of Research and Portfolio Manager (Loan Portfolios)

Prior to joining Oaktree in 1995, Mr. Shirazi spent eight years at Citicorp in credit research. While at Citicorp, he was responsible for reviewing the credit quality of prospective borrowers and monitoring existing loans. Mr. Shirazi holds a B.A. degree in Economics from the University of California at Los Angeles. Together with Francie Nelson, Mr. Shirazi currently serves as Co-Director of High Yield Research. Responsibilities for the position include assisting the Portfolio Manager with the research process as well as with certain personnel matters within the group. In addition, Mr. Shirazi has primary coverage of the automotive, airline and telecommunications industries.

Francie Nelson

Managing Director and Co-Director of Research

Ms. Nelson joined Oaktree's operations area in 1995, after serving on the consulting team from Price Waterhouse which helped design and implement Oaktree's back-office operations. In 1996, she transferred to the High Yield Research Group as a Junior Analyst. At Price Waterhouse, she was a Senior Consultant in the Investment Management and Securities Operations Consulting Group, where she served since 1991. Ms. Nelson received a B.S. degree in Mechanical Engineering from Cornell University and is a CFA charterholder.

George Leiva

Managing Director and Head Trader

Mr. Leiva joined Oaktree in 1995 after spending 13 years at TCW, where he was a Senior Vice President. His responsibilities at TCW included three years in Operations and 10 years in Trading. He was promoted to High Grade Fixed Income Trader in 1985 and transferred to the High Yield Bond Department as Senior Trader in 1988. Mr. Leiva attended Santa Clara University.

The information contained in this material has been prepared by MLC Limited (ABN 90 000 000 402) and MLC Investments Limited (ABN 30 002 641 661) and is intended as general information only and is current as at 31 May 2008, except for the amount managed which is updated as stated. It has not been prepared to take into account individual investment objectives, financial situation or investment needs. Prior to making an investment decision, you should assess whether the information in this material is appropriate to your particular investment objectives, financial situation or investment needs. It is recommended that you obtain financial advice specific to your situation before making any financial investment or insurance decision. Past performance is not indicative of future performance. The future value of your investment may rise and fall with changes in the market.

An investment with MLC Limited or MLC Investments Limited does not represent a deposit with, or a liability of National Australia Bank Limited (ABN 12 004 044 937) or other member company of the National group of companies and is subject to investment risk including possible delays in repayment and loss of income and capital invested.

None of MLC Limited or MLC Investments Limited or other member companies in the National Group of companies, or appointed managers guarantee the capital value or performance of any specific investments selected by investors except where specified in the current disclosure document.

